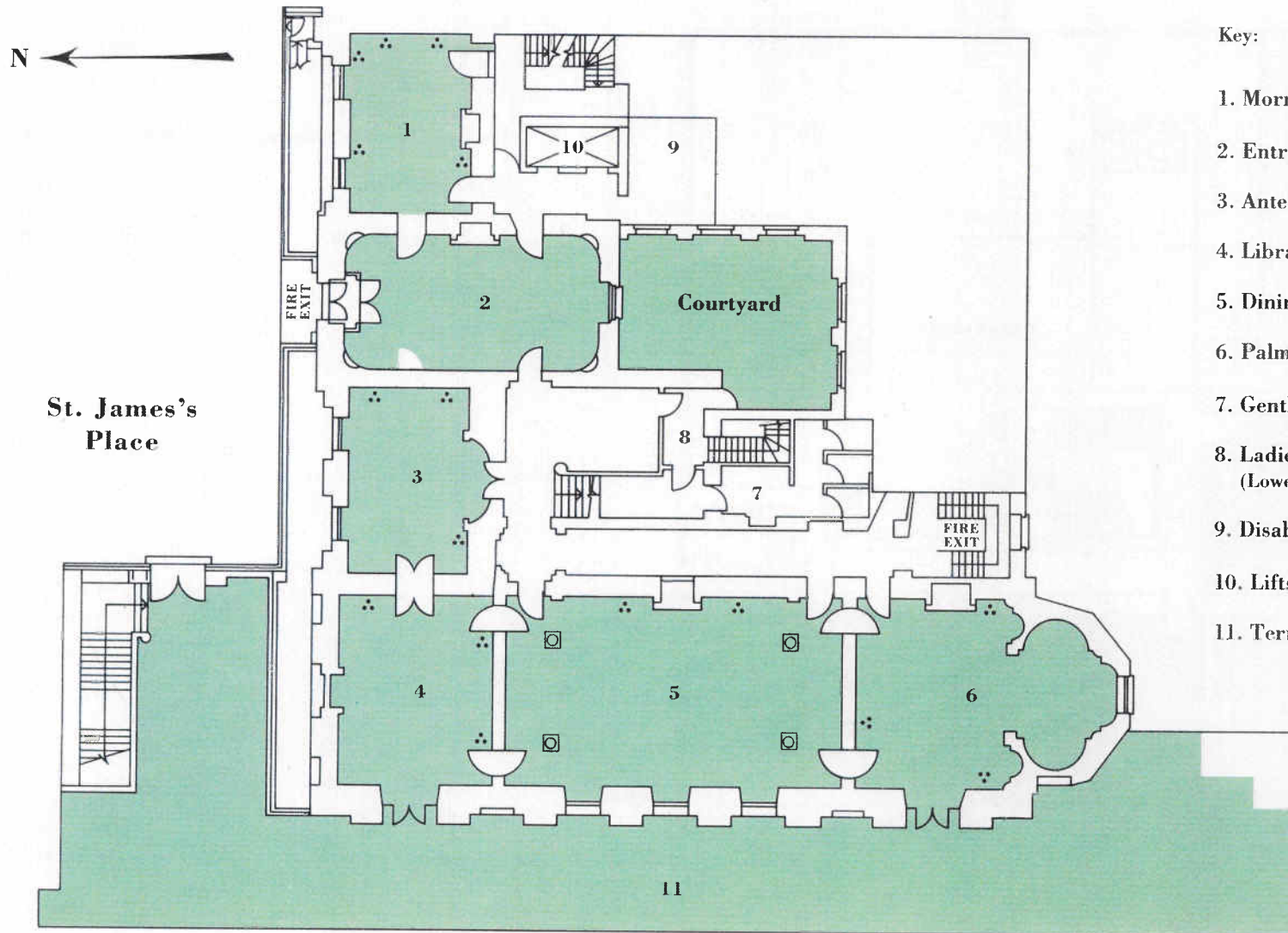


# SPENCER HOUSE

## Ground Floor



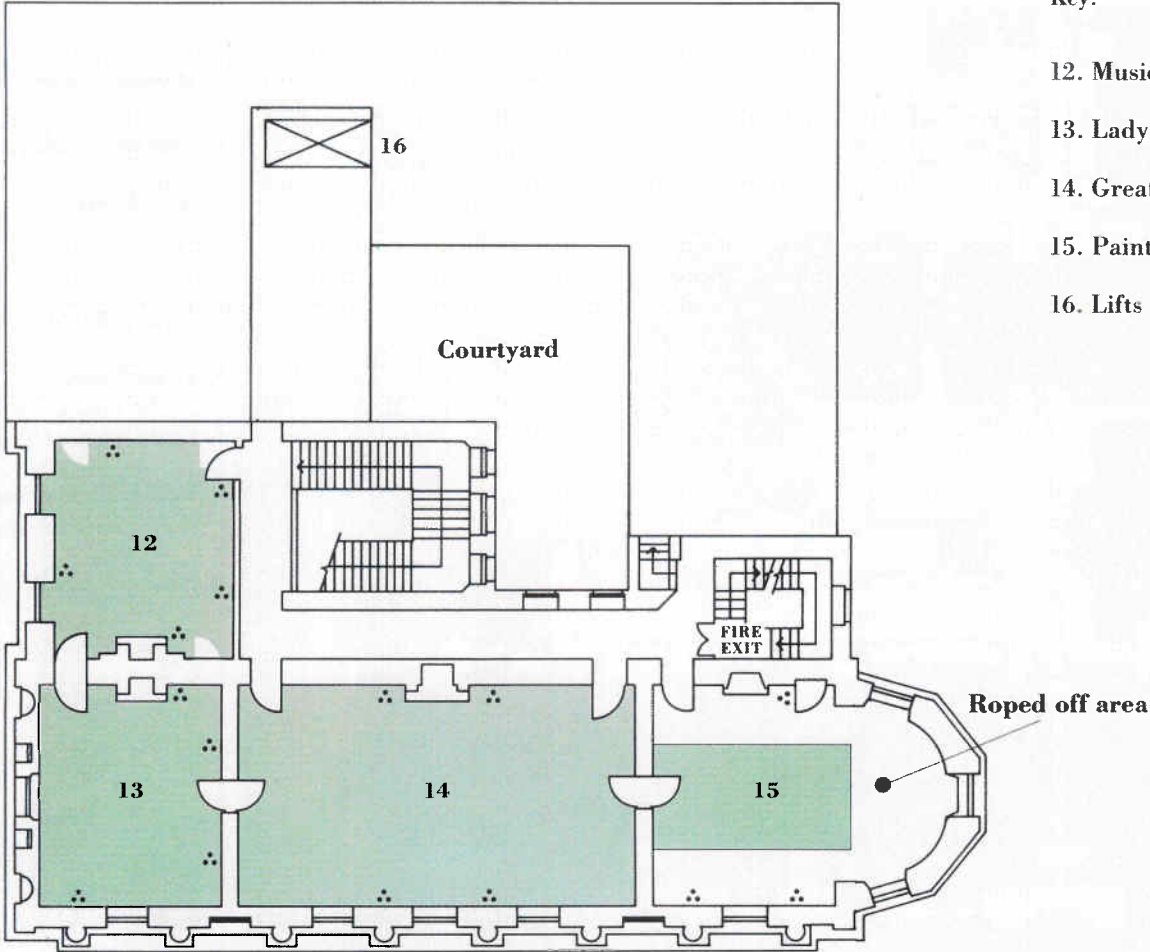
Key:	Dimensions	
	metres	feet
1. Morning Room (Coats)	4.88 x 6.80	16 x 22
2. Entrance Hall		
3. Ante Room	4.60 x 7.10	15 x 23
4. Library	6.00 x 7.20	20 x 24
5. Dining Room	8.85 x 7.20	29 x 24
6. Palm Room	6.10 x 7.20	20 x 24
7. Gentlemen's Cloakroom		
8. Ladies Cloakroom (Lower Ground Floor)		
9. Disabled Cloakroom		
10. Lifts		
11. Terrace	48 x 13.40	160 x 43

# SPENCER HOUSE

## First Floor



St. James's  
Place



Key:

Dimensions  
metres      feet

- 12. Music Room                      6.10 x 6.80    20 x 22
- 13. Lady Spencer's Room        6.00 x 7.20    20 x 24
- 14. Great Room                     13.30 x 7.20   44 x 24
- 15. Painted Room                  6.20 x 7.20    20 x 24
- 16. Lifts