



DoubleTree by Hilton London – Tower of London has a great variety of event space allowing full flexibility.

Enjoy superb service from our professional events team, modern meeting room technology and contemporary comfort in all of our meeting rooms. All conference and event packages will include a complimentary Wifi option. Every meeting room benefits from floor-to-ceiling natural daylight.

All conference and event packages will include a complimentary Wifi option. Every meeting room benefits from floor-to-ceiling natural daylight.

MEETING ROOM SPECIFICS

- 10 versatile meeting rooms accommodating between 4-220 guests
- Superb, bright break out area under the impressive glass atrium
- Exclusive Meeting Floor hire option available
- Natural Daylight in all meeting rooms, guest rooms and public areas
- Complimentary WIFI option available
- Event Bonus points for all meetings and events booked with the hotel
- iMac entertainment system, PA system and call button available in all meeting rooms

- Impressive 12th floor board room with 270 degree spectacular views of the City of London
- Private dining options available for groups of up to 170
- Break out areas ideal for large or small groups such as lobby bar with library area, Gallery booths and Gallery Balcony
- Themed breaks and creative menu designs available at a supplement
- Private drinks reception up to 100 people available on North Roof Terrace



TESTIMONIALS

"We were very pleased with everything, the rooms were great, food was very good, always a member of staff close by to help if needed and nothing to much trouble. Thanks very much and I will be in touch with future meeting dates".

Annie Byrne
Health Interactions

"Our event on Friday was perfect!. Please pass on my thanks to your staff".

Annajane Thorpe
Towergate Insurance

"Thank you and all your staff for the great support".

Ms Gaia Rimini
Congress GMB (By Business Centre)

"– it was a joy to work with you all. The client was very positive and certainly enjoyed the hotel very much. I wouldn't hesitate to recommend the hotel to anyone".

Jennifer Hepburn
Aeval Consultants (NetApp)

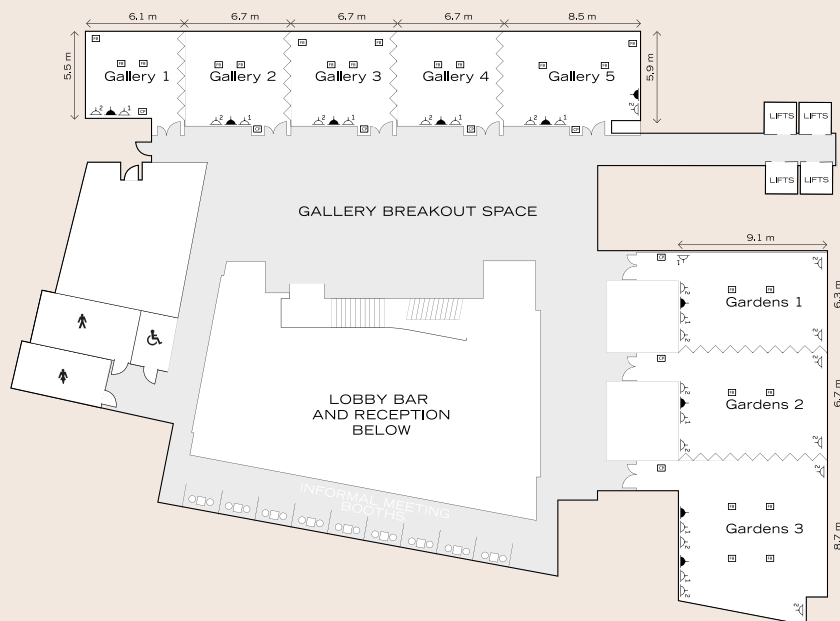
"We have a number of these events every year and have used a number of facilities around the City. This is the first time we have used your hotel, and I just wanted to write and thank you and your staff for doing an excellent job. Your colleagues were all extremely helpful and engaged and the quality of food and drink, and the way that it was presented was great.

In particular I would like to mention Wilson de Silva and KK, as well as all your bar staff who were very accommodating with our ever changing needs! It was a very successful event for us and you can be sure that we will be looking to do further business with you again in the future".

Karl Hennessy
AON



	LENGTH X WIDTH	HEIGHT	THEATRE	BOARDROOM	U-SHAPE	CLASSROOM	CABARET	RECEPTION	PRIVATE DINING
FIRST FLOOR									
Gallery 1	6.1 x 5.5	3.0	24	14	12	14	16	30	20
Gallery 2	6.7 x 5.9	3.0	30	16	14	16	21	40	30
Gallery 3	6.7 x 5.9	3.0	30	16	14	16	21	40	30
Gallery 4	6.7 x 5.9	3.0	30	16	14	16	21	40	30
Gallery 5	8.5 x 5.9	3.0	40	20	18	20	32	50	40
Gallery 1 + 2	12.8 x 5.5	3.0	60	30	28	34	32	60	50
Gallery 2 + 3	13.4 x 5.9	3.0	65	32	30	36	42	70	60
Gallery 3 + 4	13.4 x 5.9	3.0	65	32	30	36	42	70	60
Gallery 4 + 5	15.2 x 5.9	3.0	77	36	34	40	49	90	70
Gallery 1 - 3	19.5 x 5.9	3.0	105	40	34	46	56	125	80
Gallery 3 - 5	21.9 x 5.9	3.0	120	52	50	56	70	145	100
Gallery 1 - 5	34.7 x 5.9	3.0	210	-	-	84	112	240	150
Gardens 1	6.3 x 9.1	3.0	60	22	20	24	32	70	40
Gardens 2	6.7 x 9.1	3.0	60	22	20	24	32	70	40
Gardens 3	8.7 x 9.1	3.0	80	28	26	40	64	80	80
Gardens 1 + 2	13.0 x 9.1	3.0	125	44	42	48	72	140	108
Gardens 2 + 3	15.4 x 59.1	3.0	140	50	48	60	88	160	110
Gardens 1 - 3	21.7 x 9.1	3.0	220	-	-	100	120	250	180
TWELFTH FLOOR									
Northview 1	4.8 x 4.4	3.0	14	8	5	8	-	18	10
Northview 2	8 x 4.4	3.0	24	14	12	14	-	30	18
Northview 1 - 2	12.8 x 4.4	3.0	45	24	-	20	-	60	40
Northview roof garden	29 x 4	-	-	-	-	-	-	100	-



DoubleTree by Hilton London - Tower of London

7 Pepys Street, London, EC3N 4AF

T +44(0)207 709 1000

E lontl.sales@hilton.com

www.doubletree.com

www.facebook.com/DoubleTreeByHiltonLondonTowerOfLondon

@doubletreetol @SkyloungeLondon

GDS codes

Sabre/Worldspan

Amadeus

Galileo

26423

LON583

1982



DOUBLETREE
BY HILTON™

LONDON - TOWER OF LONDON